



41 Oldbury Orchard, Churchdown, Gloucester, Gloucestershire, GL3

2PU
£399,995

CHOSEN
ESTATE AGENTS

THE PROPERTY

Chosen Estate Agents are thrilled to be presenting this two-bedroom detached bungalow to the market boasting stunning, far-reaching views!

Situated in Oldbury Orchard, at the heart of the ever-popular Churchdown Village, this sizeable bungalow comprises generous living room, dining room, kitchen, two bedrooms, and shower room.

Externally, the home provides a driveway to the front with off road parking for three vehicles, and a single garage.

The beautifully maintained, enclosed rear garden is mainly laid to lawn, whilst offering a patio space perfect for Alfresco dining!

A viewing really is needed to fully appreciate the enviable views this property offers!

- Two Bedroom Detached Bungalow
- Popular Village Location
- Stunning Views
- Driveway And Garage
- Enclosed Rear Garden
- No Onward Chain
- EPC Rating: D65
- Council Tax Band: D

Agents Note

Freehold.

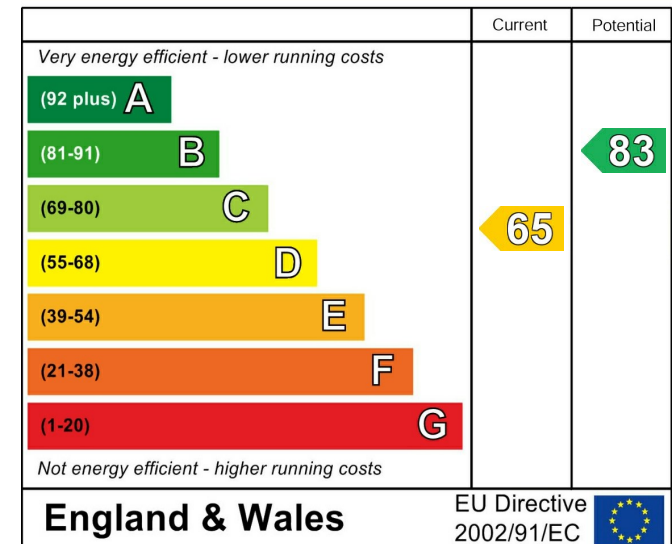
EPC Rating: D65

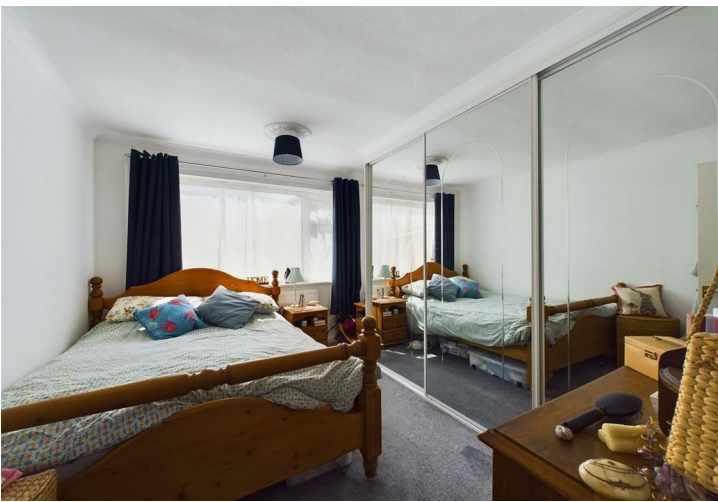
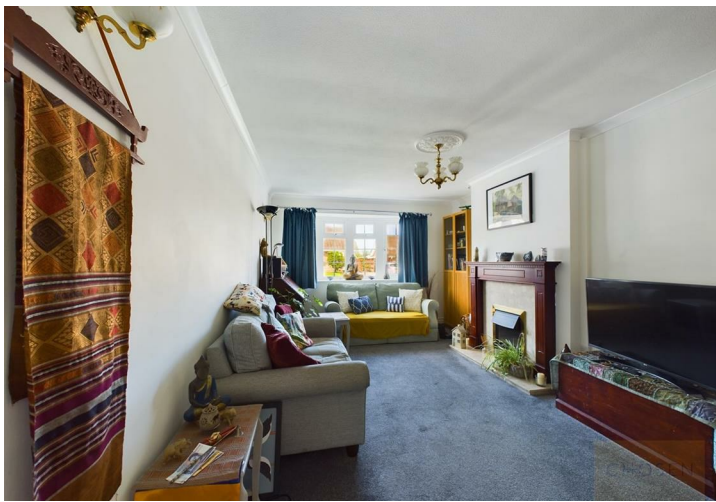
Council Tax Band: D

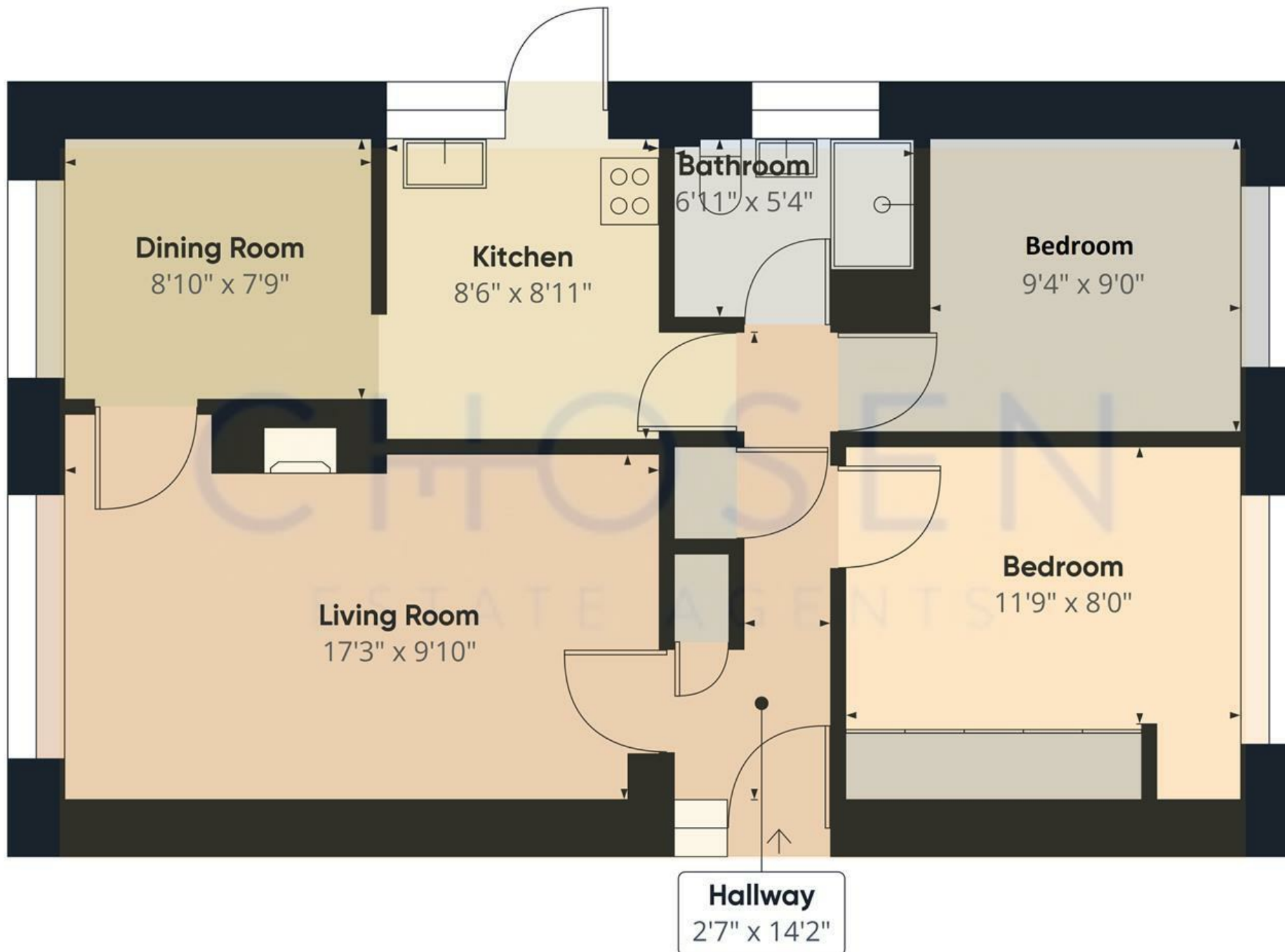
Mains Gas, Electric and Water are connected.

Fibre Broadband is available in the area.

Energy Efficiency Rating







Approximate total area⁽¹⁾

656.44 ft²

(1) Excluding balconies and terraces

While every attempt has been made to ensure accuracy, all measurements are approximate, not to scale. This floor plan is for illustrative purposes only.

GIRAFFE360